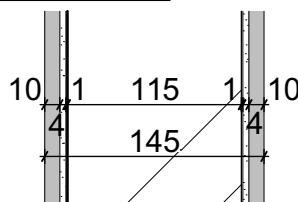


# CERAMIC WALL CW3

SC 1:5



## COMPOSITION OF BATHROOM WALL HELUZ 11.5

N	FUNCTION	MATERIAL SPECIFICATION	STABILIZATION	THICKNESS
1	GROUTING MORTAR	FLEXIBLE GROUTING MORTAR curing time 24 hours, flexural strength $\geq 2.5 \text{ N/mm}^2$ , compressive strength $\geq 15 \text{ N/mm}^2$	rubber trowel	-
2	SURFACE FINISH	CERAMIC TILES dimenstions 30 x 30 cm, coefficient of thermal conductivity $\lambda_u 1.01 \text{ W/m}^2\text{K}$ , diffusion resistance factor $\mu > 0.5$ , anti-slip R11	-	10
3	TILE ADHESIVE	CEMENTITIOUS ADHESIVE WITH EXTENDED OPEN TIME AND REDUCED SLIP curing time 24 hours, consumption 3-5 kg/m <sup>2</sup> , 4 mm in case of 30x30cm tiles, tensile adhesion strength $\geq 1.0 \text{ N/mm}^2$ , fire reaction class A1, slip $>0.5 \text{ N/mm}^2$	stainless steel trowel	4.0
4	WATERPROOFING	ACRYLIC EMULSION BASED, ONE COMPONENT ELASTIC WATERPROOFING curing time 4 hours, consumption 1.5 kg/m <sup>2</sup> , 3 layers, tensile strength $\geq 0.8 \text{ N/mm}^2$ , tensile adhesion strength $\geq 0.8 \text{ N/mm}^2$ , water-vapour permeability class I, equivalent air thickness $S_d < 5$	brush or roller	1.0
5	PENETRATION	ACRYLIC PRIMER ready to use acrylic based primer, temperature range (+5°C)-(+35°C), mininum drying time 45-60 minutes, pot life 20 minutes, consumption 150 gr/m <sup>2</sup> , 2 layers needed	roller, brush or spraying machine	-
6	PARTITION	PARTITION MASONRY BRICK monolayer, heat transfer coefficient U 1.42W/m <sup>2</sup> *K, coefficient of thermal conductivity $\lambda_u 0.259 \text{ W/m}^2\text{K}$ , fire reaction class A1, fire resistance EI 120 DP1, airborne noise Rw 45, diffusion resistance factor $\mu 5/10$	-	115
7	PENETRATION	ACRYLIC PRIMER ready to use acrylic based primer, temperature range (+5°C)-(+35°C), mininum drying time 45-60 minutes, pot life 20 minutes, consumption 150 gr/m <sup>2</sup> , 2 layers needed	roller, brush or spraying machine	-
8	WATERPROOFING	ACRYLIC EMULSION BASED, ONE COMPONENT ELASTIC WATERPROOFING curing time 4 hours, consumption 1.5 kg/m <sup>2</sup> , 3 layers, tensile strength $\geq 0.8 \text{ N/mm}^2$ , tensile adhesion strength $\geq 0.8 \text{ N/mm}^2$ , water-vapour permeability class I, equivalent air thickness $S_d < 5$	brush or roller	1.0
9	TILE ADHESIVE	CEMENTITIOUS ADHESIVE WITH EXTENDED OPEN TIME AND REDUCED SLIP curing time 24 hours, consumption 3-5 kg/m <sup>2</sup> , 4 mm in case of 30x30cm tiles, tensile adhesion strength $\geq 1.0 \text{ N/mm}^2$ , fire reaction class A1, slip $>0.5 \text{ N/mm}^2$	stainless steel trowel	4.0
10	SURFACE FINISH	CERAMIC TILES dimenstions 30 x 30 cm, coefficient of thermal conductivity $\lambda_u 1.01 \text{ W/m}^2\text{K}$ , diffusion resistance factor $\mu > 0.5$ , anti-slip R11	-	10
11	GROUTING MORTAR	FLEXIBLE GROUTING MORTAR curing time 24 hours, flexural strength $\geq 2.5 \text{ N/mm}^2$ , compressive strength $\geq 15 \text{ N/mm}^2$	rubber trowel	-

### NOTES:

- 5, 7 painted on clean, flat (maximal deviation 30 mm), dry, degreased surface in temperatures higher than 5 degrees
- 3,9 corners have to be treated by butyl tape, width 100 mm before placing of the adhesive